

THE DEAN'S NEWSLETTER

FROM THE DEAN



As part of its commitment to interreligious learning, the GTU is working to expand the range of religious communities represented in our theological consortium. As President Potterveld likes to point out, the pace at which we have reached out to include other religious communities has increased as the religious diversity of US culture has become more significant.

The Center for Jewish Studies was established in 1972, six years after the founding of the GTU. Thirteen years later in 1985, the Institute for Buddhist Studies, a Shin-affiliated Buddhist seminary in Berkeley, became an affiliate of the GTU. Twenty-two years later we established the Center for Islamic Studies in 2007. In 2015, we established the Center for Dharma Studies, which offers regular courses in Hindu and Yogic traditions.

We are currently in conversation with members of the Jain community who are interested in establishing Jain studies at the GTU. We have invited renowned Jain scholar, Professor Jeffery Long of Elizabethtown College to give the Surjit Singh Lecture in Comparative Religious Thought and Culture on Wednesday, February 22 at 7:00. Purushottama Bilimoria of the Center for Dharma Studies will offer a course on Jainism in the spring semester. It is our hope that this lecture and course will introduce Jainism, with its principled non-violence and its rich traditions of spiritual practice, to our interreligious GTU community and introduce the GTU to the Jain community.

We are also in conversation with leaders of the Sikh community. We plan to offer two courses in the spring semester by Professor Rahuldeep Gill, a Sikh scholar from Calutheran University: an introduction to Sikhism and a course on religious pluralism in the Punjab. We also plan to invite him to give a lecture in early November.

Jainism and Sikhism, though not well-known in the West, are important in the history of religions and have increasing presence in US society. We at the GTU have a rare opportunity to expand our interreligious learning and relationships.



INSIDE THIS ISSUE

DISTINGUISHED FACULTY LECTURE:	2
PCTS MEETING	2
CTNS EVENTS.....	3
CARE EVENTS.....	3
CJS LECTURE.....	4
ASIA PROJECT	5
CIS NEWS.....	6
IBS EVENTS.....	7

SPECIAL POINTS OF INTEREST

- SOP WORKSHOP
- BERKELEY JOURNAL OF RELIGION AND THEOLOGY CALL FOR PAPERS
- GTU @ AAR/SBL 2016



DISTINGUISHED FACULTY LECTURE:

NOVEMBER 10, 2016, 7PM

Dr. Elizabeth Liebert, Professor of Spiritual Life at San Francisco Theological Seminary (SFTS) will deliver the 2016 Distinguished Faculty Lecture on Thursday, November 10, 2016, 7:00pm at the PSR Chapel. Each year the faculty of the Member Schools nominate distinguished faculty from outside their school who they feel embody the scholarly standards, teaching excellence, and commitment to ecumenism that define the GTU. The nominations are considered by the Council of Deans who elects the Distinguished Faculty Lecturer. The Distinguished Faculty Lecture is entitled "Academic Life and Scholarship as Spiritual Practice." The responses will be given by Dr. Robert Russell,

Ian G. Barbour Professor of Theology and Science at the Center of Theological and Natural Sciences, a program unit of the Graduate

Theological Union (CTNS/GTU), and Dr. Kathryn Barush, Thomas A. Bertelsen Assistant Professor of Art History and Religion of the Jesuit School of Theology and Graduate Theological Union (JST/GTU). Immediately following the lecture, there will be a reception in the Badé Museum across the courtyard from the PSR Chapel.



NEWHALL APPLICATIONS DUE FRIDAY, NOVEMBER 11, 2016

Newhall Awards are competitive awards for GTU doctoral students engaged in collaborative teaching or research with faculty mentors in the belief that such collaborative work would contribute to the professional development of the students and the mission of the GTU. Awards are given for fall, spring, or both semesters, but the application process takes place only in the fall. The Newhall Award Application form available on the GTU webpage. The form contains all guidelines and criteria the Dean and Core Doctoral Faculty Awards Committee use to select award recipients. Complete applications are due in the GTU Dean's Office by **5pm Friday, November 11**; these must come from the student and the professor for a project involving both. Award amounts depend on the number of appointments made, but are generally at least \$3000 per semester. **Late materials will not be accepted.**

PACIFIC COAST THEOLOGICAL SOCIETY MEETING NOVEMBER 4TH—5TH

From 1:30-8:30 p.m. on Friday and Saturday, November 5 from 9 a.m.—noon in Classroom "B" at Church Divinity School of the Pacific.

The theme is *Climate Change Challenges: Faithful Responses to Ecological Crisis* and begins Friday afternoon with a paper by Rev. Dr. Malcolm Clemens Young (Dean of the Episcopal Grace Cathedral, San Francisco). His topic stems from his book, *The Invisible Hand in the Wilderness: Economics, Ecology and God*, Mercer University Press, 2014. This is followed by Dr.

Cynthia Moe-Lobeda (CDSP), author of *Resisting Structural Evil: Love as Ecological-Economic Vocation*, Fortress Press, 2013. Her work addresses issues of social justice and climate change. Saturday morning, the paper entitled, "Asceticism: A Missing Dimension in Climate Change Responses" by Ann R. Woods (GTU) is discussed. Lastly, Dr. Devin Zuber (GTU and Swedenborgian Studies) draws on his expertise in American Studies, Religion and Literature to close the Meeting.



PCTS is a professional society dedicated to the exchange of views on topics germane to the theological endeavor. Go to www.pcts.org for further information.

Coffee with the President

The Student Advisory Committee invites you to enjoy morning coffee, pastries, and conversation with GTU President Riess Potterveld.



Tuesday, October 4, 9:00 to 10:30am at the President's office on the 3rd floor of the GTU Library. Drop in when you can!

Fall Forum for Doctoral Students, November 9, 12:30-2pm, Student Lounge, 2465 LeConte. The Student Advisory Committee is sponsoring this forum for doctoral students *called Live Smart at the GTU: Sharing Resources and Strategies for Survival*. Pizza and refreshments will be served.

Reading Week Mini Boot Camp

Does your reading week plan include getting lots of writing done? You're not alone and you don't have to work alone! Join other writing-crazed GTU students for a writing mini-boot camp (which means focused writing time). This is open to all PhD/ThD students and MA thesis writers. Drop in when you can!

10am-3pm, October 24-28, Dinner Board Room of the GTU Library. RSVP to Leslie Bowling-Dyer at lbowling-dyer@ses.gtu.edu

CENTER FOR THEOLOGY & THE NATURAL SCIENCES

Tuesday, October 18, 7pm
Celebrating CTNS's 35th Anniversary and New Beginning as a Program Unit of the GTU



Program and Reception
Free and open to the public
Dinner Board Room, GTU Library

Wednesday, November 9, 7pm
CTNS Faculty Showcase

A sampling of theology and science research by faculty from around the GTU.

Speakers: Ted Peters, Rita Sherma, Lisa Fullam



Free and open to the public
Dinner Board Room, GTU Library

STATEMENT OF PURPOSE WORKSHOP TUESDAY, OCTOBER 4, 12:30PM – 2PM

Applying to Doctoral Programs? This workshop will help you with a key component in the process. Join GTU Admissions Director, Dr. Andrea Sheaffer, and faculty panelists Barbara Green and Jay Johnson who will provide key suggestions for crafting this short but important document. Light refreshments will be served. RSVP to admissions@gtu.edu or 510-649-2460



BERKELEY JOURNAL OF RELIGION & THEOLOGY **CALL FOR PAPERS & STAFF**

GTU students and faculty are welcome to submit papers and book reviews for inclusion in Vol.

3. **The deadline is February 1, 2017.** Instructions and style guide are available on our website <http://gtu-bjrt.wixsite.com/bjrt>.

Questions on the suitability of articles should be directed to the new chief editor, Dan Moceri (bjrt@ses.gtu.edu), and questions on book reviews should be directed to the book review editor, Justin Staller.

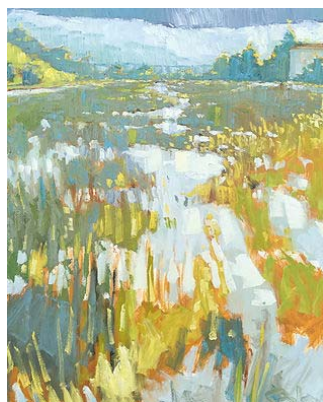
LIBRARY NEWS!

A reminder about our new Chat Service! You can now ask a Librarian via chat. This service is great for quick questions and getting started with your research, assisted by one of your friendly reference librarians. The chat box is located on the library homepage, in our LibGuides, and in Moodle. As always, you can still call (510-649-2501), email (library@gtu.edu), or visit!

This month's highlighted tool is Worldcat.org. Worldcat (short for world catalog) should be your go-to tool for finding books beyond the GTU. Distance students- use WorldCat to find books near you, by entering your zip code. The book you are looking for might be around the corner. If the book is at UC-Berkeley, you can get a UCB library card by visiting the Privileges Desk in Doe, and showing them your semester sticker. If you are away from the Bay Area, you might be able to use a local seminary library through the ATLA reciprocal borrowing program. Email your location to library@gtu.edu and we can provide more detail.

Enjoy art? Be sure to check out the current art exhibit, "The Life and Work of Fr. Michael Morris, OP." The exhibit will be on display in the library until January 31, 2017.

CARE EVENTS



Canal by the Railroad Tracks,
oil on canvas, 48 x 60", 2016

"The Hermitage of Landscape: Works by Nicholas Coley" on view through December 9, 2016.
Doug Adams Gallery, 2465 Le Conte Avenue, Berkeley Gallery Hours: Tuesdays, Thursdays, Fridays, 10am-3pm

All events below at the Doug Adams Gallery except as noted

Panel Discussion: Spiritual Ecology October 5 | 5pm

In connection with our current Fall 2016 exhibition, "The Hermitage of Landscape: Works by Nicholas Coley".
Guest Speakers: **Dr. Cynthia Moe-Lobeda** (Pacific Lutheran Theological Seminary), **Dr. Riess Potterveld** (Graduate Theological Union), **Dr. Rita Sherma** (Center for Dharma Studies), and **Dr. Devin Zuber** (Center for Swedenborgian Studies)

Brown Bag Lunch Series- Visions of Nature

Presenter: **Karen Sjolholm, MA,**
REACE

October 7 | 12-1pm

This presentation will explore the ways that contemporary artists and poets around the world are seeking to illuminate the beauty, spirituality, and challenges of the human relationship with nature. An experiential creative exercise will be included in the presentation. No art experience is necessary.

Yoga in the Gallery

October 12 | 12-1pm

Free | all levels welcome | no experience necessary

Join us for an hour-long session by registered yoga teacher Lily Manderville (CARE Programs Manager). Open to all GTU member school students, faculty, and staff. Comfortable work clothes recommended. Please bring a hand towel and water bottle. 2nd Wednesday of each month, 12-1pm.

Third Thursdays at BAMPFA

Presenter: *TBA*

October 20 | 4:30pm | Berkeley Art Museum & Pacific Film Archive 2155 Center Street, Berkeley

After gathering in the BAMPFA lobby at 4:30pm, we'll hear a short talk about an artwork on display. Then, we can amble around the museum and /or go have a drink in the café!

Environmental Change, Re-thinking Religion

Interdisciplinary Panel with Graduate Theological Union faculty and REDO scholars
October 23rd | 2:30-4:30pm

In this public afternoon panel, GTU scholars who work on environmental issues will engage with scholars from Reassembling Democracy: Ritual as Cultural Resource (REDO), an international research group that explores ritual and culture. How have some of the new concerns with animism, posthumanism, the so-called "new materialism" affected the study of religion and ecological crisis?

What concerns are currently at-stake in theorizing ritual and our connections to the "other than human" world?

Participants include **Dr. Rita Sherma**, **Dr. Kirsi Stjerna**, and **Dr. Robyn Henderson-Espinoza**. The conversation is inspired by the exhibition of landscape paintings by Nicholas Coley which raises questions of spirituality and the ecological. Moderated by **Jone Salomonsen** and **Devin Zuber**.

ASIA PROJECT FALL FORUM: NEW VOICES OF ASIA & OCEANIA

Asia Project at GTU cordially invites GTU PhD students who are working on projects on Asia or Oceania related topics or topics relevant to Asian or Oceanian contexts to present their projects at the student-led forum on October 20th, 2016. If you have completed 2 years of course work or beyond, you are eligible to apply for this forum

This is an opportunity for you to contribute to the GTU community with your valuable work and let the GTU community know what Asia/Oceania-related issues are studied and discussed in Academia recently. The event is open to the public and free lunch (delicious Asian cuisine!) will be provided. GTU students and faculty who are interested in the Asian and Oceanic culture and religion will be invited.

**Thursday, October 20th,
2016 @ 12:30-2:00 pm, GTU**

Dinner Board Room



To be considered, please send your presentation abstract (300 words) noting how your topic is related to Asia or Oceania to the Asia Project Coordinator by Sept. 26th, if you want to present your work in the forum. In your abstract, please include your name, area, and the title of your project/dissertation. The decision will be announced by Sept. 30th via e-mail. (asia-project@ses.gtu.edu or pastor-peterpark@gmail.com)

CENTER FOR JEWISH STUDIES

SUKKAH BUILDING PARTY

THURSDAY, OCTOBER 13TH:

12:45pm: 2465 Le Conte Avenue Berkeley, CA 94709



“THE MARRIAGE PLOT: NAOMI SEIDMAN IN CONVERSATION WITH GABRIELLA SAFRAN.”

The GTU's Richard S. Dinner Center for Jewish Studies is hosting an event celebrating the publication of Dr. Naomi Seidman's long-awaited work, *The Marriage Plot Or, How Jews Fell in Love with Love, and with Literature* (Stanford University Press). Dr. Seidman will be speaking about her latest book in conversation with Stanford University's Dr. Gabriella Safran.



Thursday, October 13th 5:30pm: Graduate Theological Union | Dinner Board Room, 2400 Ridge Road, Berkeley CA 94709

GTU @ AAR/SBL!

The American Academy of Religion brings thousands of professors and students, authors and publishers, religious leaders and interested laypersons to its Annual Meeting each year. Co-hosted with the Society of Biblical Literature, the Annual Meetings are the largest events of the year in the fields of religious studies and theology.

The Graduate Theological Union is holding an **Alumni Reception** in conjunction with the 2016 Annual Meetings in San Antonio, TX hosted by the SBL and AAR!

This year the Alumni Reception is scheduled for **Saturday, November 19 from 8:00:00 PM to 11:00:00 PM** in the **La Vista, Rooms ABC** at the **Hilton Palacio del Rio**.

Current students & faculty are welcome to attend!

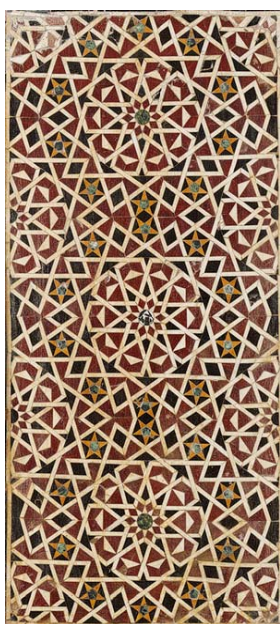
For more information please visit: <https://www.aarweb.org/2016-annual-meeting-in-san-antonio-nov-19-22>



CIS NEWS

Congratulations to Islamic Art Historian and CIS Visiting Scholar, Carol Bier, who will be participating in the Third Global Islamic Economy Summit, in Dubai, UAE, 11-12 October 2016, under the patronage of H. H. Sheikh Mohammad bin Rashid al Maktoum. Carol is one of several international speakers in a panel addressing "Reviving Islamic Art & Design: Unconventional Applications of Architecture, Geometry, and Calligraphy." She will also be lecturing faculty and students at the United Arab Emirates University in Al 'Ain.

Congratulations to CIS Visiting Scholar, Dr. Kei Takahashi, who served as a discussant in the joint seminar of French and Japanese scholars on Sufi Doctrine and Rituals, which was co-hosted by CNRS, Sophia University and Kyoto University and held in Paris, France, on 6 September 2016.



Fall 2016 MA and PhD Graduates in Islamic Studies

Center for Islamic Studies at the GTU is delighted to share with you that we have four more CIS students who have completed their MA in Islamic Studies and two students who have completed their PhD in Islamic Studies within the area of Cultural and Historical Studies of Religions. Formal and official conferral of degrees will take place at the GTU graduation in May 2017.

Congratulations to the following students and their families:

MA

May Kosba, From Ikhwanophobia to Islamophobia: Post-Colonial Cultural Nationalism in Post-Revolutionary Egypt

Reem Kosba, Contemporary Christian-Muslim Relations in Egypt: Secularism, Violence, and the Challenges of Conflict Resolution

Rania Shah, Al-Ghazali on Reason and Revelation: A Revival in the Heart of the Islamic Scholarly Tradition (with honors)

Saad Shaukat, Shibli Nomani's Contribution to *Kalam*

PhD

Abdel Ali, The "Negro" in Afro-Arabian Muslim Consciousness

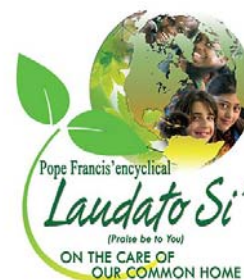
Ali Ataie, Authenticating the Johannine *Injil*: Sunnite "Polemirenic" Interpretive Methodological Approaches to the Gospel of John

They join a distinguished number of GTU alums in Islamic Studies, and we commend them for their excellence in scholarship, and for playing important leadership roles in bridging academia with the larger public.

IMAGINATION & COOPERATION IN THE CARE FOR OUR COMMON HOME - OCTOBER 5, 2016

In his encyclical letter, *Laudato Si' – On Care for our Common Home*, Pope Francis invites all people to enter into dialogue about our common home. This conference is designed to open up a dialogue on the anthropology of the human person. By engaging experts from evolutionary anthropology, philosophy, and theology, along with members of the faculty and students of GTU, this conference will explore the role that human imagination can play in building a cooperative approach to the care for our common home.

The conference begins at 9am on Wednesday, October 5th and takes place at the Dominican School of Philosophy & Theology (DSPT), located at 2301 Vine Street, Berkeley. It is sponsored in part by grants from the John Templeton Foundation and the Karen Lebacqz Endowment in Ethics.



INSTITUTE OF BUDDHIST STUDIES

On **October 22, 2016** the Jodo Shinshu Center, home to the Institute of Buddhist Studies, is celebrating the **10th anniversary** of the opening of the facility. The construction of the Center brought together the Institute of Buddhist Studies (IBS), the Center for Buddhist Education (CBE), the BCA Bookstore and the offices of Jodo Shinshu Hongwanji-ha and Ryukoku University under one roof with convenient access to the University of California and the Berkeley community.



The BCA Jodo Shinshu Center allows us to host programs and events focused on traditional as well as contemporary topics for the followers of Shin and many other Buddhist traditions. Educational opportunities include graduate courses, lectures, seminars, symposia, workshops, retreats, and dharma talks for young and old alike.

PROFESSIONAL DEVELOPMENT PROGRAM

Navigating Conferences: Presentations, Stage Presence, and the Importance of Networking October 5th
1pm | Student Lounge

with Kathryn Barush, Assistant Professor of Art History and Religion, GTU/JST; Chris Ocker, Professor of Church History, SFTS; Eugene Park, Dana and Dave Dornsife Professor of New Testament, SFTS.

Writing Successful CV and Cover Letters October 19th | 10am | Student Lounge

Jennifer Davidson, Associate Professor of Theology and Worship and Director of Chapel, ABSW; Filipe Maia, Assistant Professor of United Methodist Studies and Leadership, PSR.



Seeking Talented Proofreaders

The Dean of Students office provides proofreading support for international students working on course papers. If you are willing and available to participate and assist with this service (for pay), please contact kkook@gtu.edu.

THE DEAN'S NEWSLETTER

The Dean's Newsletter is for official notices from the GTU Dean's Office regarding academic affairs and for announcements of educational events (lectures, conferences) focusing on academic research and thus of particular interest to faculty and MA and PhD students.

Send submissions to
Angela Muñoz,
amunoz@gtu.edu.

GRADUATE THEOLOGICAL UNION
Office of the Dean
2400 Ridge Road
Berkeley, CA
94709
<http://www.gtu.edu>

Phone: 510-649-2440
Fax: 510-649-1417
E-mail: amunoz@gtu.edu



HONORABLE MENTION

MA STUDENTS

Thesis Successfully Defended

Reem Kosba, CIS

David Anthony, SFTS

Rabail R. Shah*, CIS

Carrie Sealine, CJS

Saad Shaukat, CIS

*With Honors

PHD STUDENTS

General Comprehensive

Sarah Kohles, BIBL

Pasesa Sapolu, BIBL

I-Sil Yoon, ETHC

Comprehensive Proposal Approved

Uzma Fatima Husaini, CHSR

Advanced to Candidacy

Levi Checketts, ETHC

Horacio De Valle, THEO

Dissertation Successfully Defended

Hun Cho Yu, THEO

Kyoung Hee Lee, SPRT

Daniel London, SPRT

Jaime Wright, ETHC

Luke Devine, SPRT

Matthew Paulson, THEO

Nada Velimirovic, ART

Matthew Boswell, SPRT

Michelle Mueller, CHSR

Sung Ho Lee, THEO

Abdel Ali, CHSR