

# THE DEAN'S NEWSLETTER

VOLUME 17, ISSUE 6

APRIL 2013

## TRANSITIONS



**Dr. Arthur Holder**  
Academic Dean and  
Vice President of  
Academic Affairs

People and institutions are always in transition, but there are times when we are especially conscious of the change that is underway. Surely this is true of the Graduate Theological Union this spring semester! The GTU and several of our member schools are engaged in strategic revisioning processes that challenge us to rethink our missions, structures, and programs from the ground up. Many current students are preparing to graduate, while prospective students are making plans to move to the Bay Area and begin their studies with us. Some faculty and staff are retiring or taking up new positions elsewhere.

On top of those kinds of transitions that happen every year, we have some major changes in leadership at the GTU with the departure of long-time administrators who have guided us through many changes in recent years. Just last week we learned that Jim Donahue, our esteemed President since 2000, will be leaving the GTU on July 1 to become the new President of Saint Mary's College of California in Moraga. We also learned that Maureen Maloney, formerly our Vice President for Student Affairs and Dean Students, has become a Vice President at the Western Association of Schools and Colleges, where she has been serving on an interim basis since last September. Their contributions to our common life and work have been enormous, and they will be missed by all of us who have worked with them.

For my part, the departure of my "boss" and the "fellow GTU dean" with whom I have served for the past eleven years is a bit disorienting, but also an opportunity to remember with

gratitude all that I have learned from them. Both Jim and Maureen have been trusted colleagues and friends who have enriched my life and inspired my admiration. I know that many throughout the GTU join me in wishing them well in their new adventures.

We often hear it said that no one is indispensable, and now we have a chance to test the truth of that common assertion! The GTU board is already at work to identify an interim president, and the Dean of Students Office continues to thrive in the capable hands of Kathleen Kook while Katie Hennessey manages the Admissions Office with aplomb even while putting the finishing touches on her dissertation so she can graduate in May.

In the midst of all these transitions, I am reminded of the famous words of the late Secretary General of the United Nations, Dag Hammarskjöld: "For all that has been—thanks! For all that will be—yes!"

### INSIDE THIS ISSUE:

CIS EVENTS, COMMENCEMENT, STUDYING DREAM, RELIGION AND THEOLOGY IN THE ERA OF BIG DATA 2

WSR EVENTS, MODERN FOREIGN LANGUAGE EXAM, IBS GRADUATE SYMPOSIUM 3

CJS EVENT, ETHICS OF THEOSIS, FILING DEADLINE, SUMMER LANGUAGE 4

DOUG ADAMS GALLERY, BRIDGING BELIEFS 5

FINANCIAL AID DEADLINES, LOAN REPAYMENT, TRIVIA NIGHT 6

HONORABLE MENTION, PHD ELECTIONS 7



## CIS EVENTS

**"Islam, Mysticism, and Dominican Life: Serge de Beaurecueil's: Praxis Mystica in Dar al-Islam,"** lecture by Professor Minlib Dalih O.P.

Wednesday, April 10, 2013 - 7:30pm

Dominican School of Philosophy & Theology. Part of Encountering Islam: Ministry in the Church and the Dominican Tradition Co-sponsored by CIS and DSPT

### **Islamophobia: Making Muslims the Enemy**

Islam & Authors series at the Islamic Cultural Center of Northern California (ICCNC), conversation with author Peter Gottschalk. Saturday, April 13, 2013 - 5:00pm  
ICCNC, 1433 Madison Street, Oakland 94612  
Tickets: \$10 general/\$5 students at the door, or available

at [www.iccnc.org](http://www.iccnc.org) Co-sponsored by the ICCNC and the Center for Islamic Studies (GTU)

### **Muslim Zion: Pakistan as a Political Idea "Muslim Zion: Pakistan as a Political Idea,"** lecture by

Dr. Faisal Devji, Oxford University

Monday, April 15, 2013 - 5:00pm

Dinner Boardroom, GTU Library

### **4th Annual International Conference on the Study of Islamophobia**

Friday, April 19, 2013 (All day) to Saturday, April 20, 2013 (All day)

UC Berkeley Booth Auditorium, Berkeley, School of Law (Boalt Law) Sponsored by the Islamophobia Research and Documentation Project of the Center for Race and Gender at UC Berkeley; co-

sponsored by the Center for Islamic Studies

### **Ibn 'Arabi and Rumi Symposium**

Keynote: "Being Fully Human", Dr. William Chittick-Friday, May 3, 2013 (All day) to Saturday, May 4, 2013 (All day)

Location: TBA

Co-sponsored by the Dominican School of Philosophy & Theology, Center for Islamic Studies, and the Ibn 'Arabi Society

### **Reading the Qur'an Workshop**

Sunday, May 5, 2013 - 12:00pm-6:00pm

Dominican School of Philosophy & Theology Co-sponsored by Zaytuna College, the Dominican School of Philosophy & Theology, and the Center for Islamic Studies

### GTU COMMENCEMENT

THE GTU COMMENCEMENT IS MAY 9 AT 4PM IN THE PLTS CHAPEL. A RECEPTION FOLLOWS THE CEREMONY OUTSIDE THE CHAPEL. COMMON MA AND DOCTORAL STUDENTS PLANNING ON PARTICIPATING IN THE GTU COMMENCEMENT CEREMONY SHOULD REPORT TO GIESY HALL FOR ROBING AND PROCESSION INSTRUCTIONS BY 3:15PM. FACULTY ARE ASKED TO REPORT TO GIESY HALL BY 3:30PM. CONTACT KATHLEEN KOOK, GTU ACTING DEAN OF STUDENTS, [KKOOK@GTU.EDU](mailto:KKOOK@GTU.EDU), 510-649-2464 FOR INFORMATION.

### STUDYING DREAMS, RELIGION, AND THEOLOGY IN THE ERA OF "BIG DATA": APRIL 3, 1:30

Please join us Wednesday, April 3, from 1:30 – 3:30 p.m., in CDSP 113 (Shires Hall) for a very special conversation:

### **Studying dreams, Religion, and Theology in the era of "big data": How might New Database Technologies aid our Research and Healing Praxis? With honored guest: Kelly Bulkeley**

Kelly Bulkeley, Ph.D. is a Visiting Scholar at the Gradu-

ate Theological Union, Berkeley, CA. A former President of the International Association for the Study of Dreams and Senior Editor of the APA journal *Dreaming*, he has written and edited several books.

Our discussion will highlight questions about religion, psychology, and pastoral counseling in the era of "Big Data." A new digital tool, the Sleep and Dream Database, will be described as an example of the pros and cons of

data mining technology in the study of religion and psychology and in caregiving practices. A primary question will be, how can those of us with training in theology and religious studies creatively adapt these kinds of tools to aid our research and healing praxis?

For further information, please contact Convener Herbert Anderson [hander-son@plts.edu](mailto:hander-son@plts.edu) or Assistant Steven Bauman at [sbauman@ses.gtu.edu](mailto:sbauman@ses.gtu.edu)

## WSR EVENTS

### WSR Cafe Series with Dr. Ghazala Anwar

Thursday, April 4, 2013 - 10:30am

WSR Cafe series presents: Dr. Ghazala Anwar "Khadija: A Model Worthy of Emulation". This talk is based on research on the portrayal of Khadija, Prophet Muhammad's first wife in hagiographies and biographies of the Prophet written by Muslims and non-Muslims as well as modern hagiographies of Khadija herself. (2 units) Please join us on April 4th at 10:30am on the 1st floor of the GTU Le Conte Building (2565 Le Conte Ave.)

### Liberal Fundamentalism in the Service of Empire: Feminism, Sexuality, Islamophobia

Thursday, April 11, 2013 -

10:30am

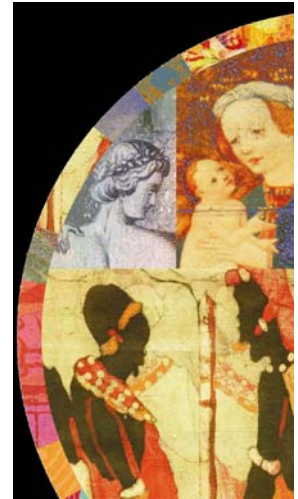
Munir Jiwa, Director of the Center for Islamic Studies

Sponsored by the Center for Islamic Studies and the Women's Studies in Religion Program

Dinner Board Room, GTU Library, 2400 Ridge Road, Berkeley

Drawing on works in anthropology and critical theory, this presentation focuses on the particular ways that discussions on women, gender, feminism and sexuality have been mobilized by the Euro-American left to discipline and exert power over Islam and Muslims in its own liberal image. This creates an index of "good" and "bad" Islam and Muslims – Islamophilia and befriending Muslims that uphold liberal values, and

Islamophobia and intimidation for those who do not. How do we understand colonial conceptions and practices of time and space embedded in terms like "progress/ive" and "universal" so intrinsic to ministry, mission, and empire, colluding on the left and right? How are Western liberalism, secularism, and the "Judeo-Christian civilization" reconfigured vis-à-vis Islam and Muslim subjectivity, especially using the frames of law and citizenship? And, by what stretch of the American imaginary and under what conditions and limits, can we make possible expanded norms of recognition of Islam and Muslim life?



THE NEXT MODERN FOREIGN LANGUAGE EXAMINATION IS WEDNESDAY, MAY 22, 1:00PM TO 4:45PM IN THE DINNER BOARD ROOM. REGISTER BY MAY 8 WITH FREDONIA THOMPSON, RECEPTIONIST AND STUDENT AFFAIRS OFFICE MANAGER, [ETHOMPSON@GTU.EDU](mailto:ETHOMPSON@GTU.EDU), 649-2400.

### 2013 ANNUAL INSTITUTE OF BUDDHIST STUDIES GRADUATE STUDENT SYMPOSIUM

Saturday, April 13, 2013 (All day)

Buddhist Ritual, Buddhist Culture

Keynote speaker Dr. Justin McDaniel, University of Pennsylvania

Institute of Buddhist Studies, 2140 Durant Avenue, Berkeley

Our theme this year is "Buddhist Ritual, Buddhist Culture." Buddhist ritual practices are shaped by their location and are affected by

the ritual objects. How does the material world determine the ways that Buddhism is practiced? How do Buddhists use ritual objects? In turn, how does Buddhism shape these objects and transform the physical world? What is the impact, for example, on the physical world as a result of religious pilgrimage or tourism? How do Buddhists transform physical objects in the process of ritualization? This symposium will focus on these themes and will consider both historical and con-

temporary uses of material objects in Buddhist ritual, Buddhism's impact on cultural materials, and the relationships between Buddhism and sacred objects.

Professor McDaniel's keynote address is being generously supported by the Yehan Numata Foundation.



## VARIETIES OF MEDIEVAL JEWISH LITERATURE: TUES APRIL 9

The Richard S. Dinner Center for Jewish Studies at the Graduate Theological Union presents the Annual GTU Jewish Studies Symposium

### Varieties of Medieval Jewish Literature

**Tuesday April 9, 8:30am-6pm, Dinner Boardroom**

Program Schedule:

8:30 Welcome  
8:45-9:30 Dina Stein (Haifa University, Visiting Professor

at GTU) Charlotte Fonrobert (Stanford), respondent  
9:45-10:30 Josh Holo (HUC) Fred Astren (SFSU), respondent  
10:45-11:30 Fred Astren Emily Gottreich (UCB), respondent  
11:30-1:30 Break  
1:45- 2:30 Daniel Joslyn-Siemiatkoski (CDSP, GTU) Deena Aranoff (GTU), respondent  
2:45-3:30 Deena Aranoff Chris Ocker (SFTS), respon-

dent  
3:45-4:30 Talya Fishman (Penn)  
4:45-5:15 Naomi Seidman (GTU), Closing Reflections  
5:15-6:00 Reception

For more information and to RSVP please contact [cjs@gtu.edu](mailto:cjs@gtu.edu) or 510.649.2482 [www.gtu.edu/cjs](http://www.gtu.edu/cjs)



Aristotle Papanikolaou

## THE ETHICS OF THEOSIS: APRIL 7-8

Patriarch Athenagoras Orthodox Institute 2013 Manolis Distinguished Lecture Series  
**The Ethics of Theosis**  
**Dr. Aristotle Papanikolaou**

Monday, April 8 – 7pm  
Orthodox Liberalism: The Politics of Divine-Human Communion  
Denniston Refectory -- Church Divinity School of the

Pacific at the Graduate Theological Union  
Reception to Follow  
Tuesday, April 9 – 7pm  
The Ascetics of War: The Undoing and Redoing of Virtue  
Valley Life Sciences Building, Room 2060  
University of California, Berkeley  
Dr. Aristotle Papanikolaou is

a professor of theology and co-founding director of the Orthodox Christian Studies Center at Fordham University. He is the author and co-editor of a number of books, including *Being With God: Trinity, Apophaticism, and Divine-Human Communion* and *The Mystical as Political: Democracy and Non-Radical Orthodoxy*.

FRIDAY, APRIL 5,  
BY 4:00PM IS  
THE DEADLINE  
TO FILE  
DOCTORAL  
DISSERTATIONS,  
MA THESES,  
MABL  
CERTIFICATION  
OF ORAL  
EXAMINATION  
FORMS, AND CJS  
CERTIFICATE  
REQUEST FORMS.

## SUMMER MODERN LANGUAGE STUDY AT THE GTU

GTU summer language study opportunities are an excellent summer activity. These courses focus on developing researching and writing facilities in the language, and provide good preparation for the GTU Modern Foreign Language Exams. The course ends with an opportunity to

take a language proficiency exam with the possibility of certifying for the GTU common MA and doctoral degree program requirements. The French course will be offered July 22 through August 6 from 9am to noon, and the German and Spanish courses are scheduled for July 15

through August 9 from 10am to 1pm. Tuition is \$650. GTU students can register via WebAdvisor starting on April 8. For registration questions, contact John Seal, GTU Consortial Registrar, [jseal@gtu.edu](mailto:jseal@gtu.edu).

## DOUG ADAMS GALLERY EXHIBITION SCHEDULE

### Spring 2013

#### **Twin Bandits** **Pamela Lanza**

Pamela Lanza is a San Francisco-based artist with an MFA from the San Francisco Art Institute who has exhibited in galleries, colleges, and universities across the country, and is represented by Sandra Lee Gallery in San Francisco. Lanza's ink drawings and mixed media works in *Twin Bandits* give voice to the troubled times we face. Dark atmospheric illustrations depict the wreckage of war and natural disasters, but at the same time offer a sense of spiritual grace rising out of the rubble. Her work invites viewers to consider aspects of spiritual transcendence lingering in the apparent wastelands of human experience.

### Summer 2013

#### **Mining the Collection** **David Sleeth**

Each year, a single artist is

invited by the Doug Adams Gallery to create a body of work inspired by the Badè archaeology collection. David Sleeth uses the study of archeology and architecture to inform his creative process. Inspired by the aesthetic effects of fabrication methods and limitations of materials, he aims to separate objects from their function creating work that alludes to the beautiful qualities recognizable in historical objects without replacing them.

### Fall 2013

#### **Birds of Longing** **Laurie Wohl**

2011 CARE grant recipient Laurie Wohl interweaves Muslim, Jewish and Christian poetry and spiritual texts from the period of the Convivencia in Spain (eighth through fifteenth centuries) with contemporary Middle Eastern poets, particularly Palestinian and Israeli. She presents the common themes

and striking parallels between Arabic and Hebrew texts—similarly rich in poetry of spiritual love, extensive poetry of exile, and poetry of nostalgia for Andalusia.

### Spring 2014

#### **Title TBD** **Paul Roorda**

A curated collection of pieces from Paul Roorda's *The End of the Book* and *Slate Requiem* series will be displayed in the Doug Adams Gallery. Both series use repurposed religious materials, aged and damaged sacred texts and slate tiles from an aged and leaking church to explore the connections between age-old rituals and the re-evaluation of dearly held convictions. Roorda uses deeply symbolic materials such as gold leaf, blood, ashes, beeswax and smoke to help create works that echo the reverence of sacred icons while examining the erosion of traditional beliefs.



## BRIDGING BELIEFS: APRIL 21, 3PM

Oakland Interfaith Gospel Choir under the direction of Terrance Kelly presents:

#### **Bridging Beliefs: Music** **Connecting Interfaith** **Community**

AN INTERFAITH PANEL of  
MUSICIANS

Through our music we are more connected than we realize! Our panelists will ex-

plore this theme with presentations of music from various traditions.

Sunday, April 21, 2013

3:00 pm to 4:30 pm

Pacific School of Religion  
Chapel, 1798 Scenic Ave,  
Berkeley, CA 94709

For updated information and details on Oakland Interfaith Gospel Choir's Workshop and Evening Concert on Saturday, April 20th please visit:

<http://www.oigc.org/2013-workshop.html>



## 2013-2014 FINANCIAL AID APPLICATION DEADLINES

Financial Aid Applications for the 2013-2014 academic year are available online at:

[www.gtu.edu/admissions/financial-aid/](http://www.gtu.edu/admissions/financial-aid/)

Applicants: please find your deadline date below and visit the GTU Financial Aid website to complete and submit the 2013-14 appli-



cation and FAFSA. To reach the Financial Aid Office with a question, [email fi-aid@gtu.edu](mailto:fi-aid@gtu.edu) or call the Office at 510-649-2469.

PAOI: April 1, 2013

SFTS: April 15, 2013

SKSM: April 1, 2013

Common MA Students affiliated with-

ABSW: April 15, 2013

CJS: April 1, 2013

FST: May 1, 2013

IBS: April 1, 2013

## PREPARING FOR SUCCESSFUL FEDERAL STUDENT LOAN REPAYMENT

All graduating students who have borrowed Federal Stafford and Graduate PLUS loans are required to complete Loan Exit Counseling prior to graduation. The Financial Aid Office will host two Federal Student Loan Exit Counseling sessions that will be held on Wednesday, April 10, 2013 at PLTS Giesy Hall, classroom 1 from 9:30am – 10:30am and at PSR Mudd, classroom 102

from 11:45am-12:45pm. The exit session will be presented by Sun Ow of Great Lakes Higher Education Corp., and will provide the following: a comprehensive and personal approach to help you understand your responsibilities as a borrower; strategies to help you manage your federal student loans, such as how to determine which repayment option fits your budget and goals and

options for deferment or postponement; an overview of loan forgiveness; how and when to contact your loan servicer; the opportunity to ask questions and to benefit from the questions of other student borrowers. To register, please email: [fi-aid@gtu.edu](mailto:fi-aid@gtu.edu) by Thursday, April 4.

## TRIVIA NIGHT: APRIL 18, 6PM

THE BADÈ MUSEUM AND DOUG ADAMS GALLERY COME TOGETHER FOR AN EVENING OF FUN FILLED BRAIN CRUNCHING IN THIS **PUB STYLE TRIVIA NIGHT**.

COMPLETE WITH BEER AND PIZZA, M.C. CARIN JACOBS WILL LEAD YOU THROUGH QUESTIONS ON ART, RELIGION, ARCHEOLOGY AND MUSEUMS. BRING FRIENDS TO MAKE A TEAM OR COME ON YOUR OWN AND JOIN ONE— A PRIZE GOES OUT TO THE WINNERS.



APRIL 18, 6-8:30 PM AT THE DOUG ADAMS GALLERY / BADÈ MUSEUM

# HONORABLE MENTION

## MA STUDENTS

### Thesis Successfully Defended

Elizabeth Tichenor - CDSP\*

Angela Botelho - CJS\*

Geoffrey Flaviani - PSR

Alexander Marcus - CJS

Sarah Stribling - PSR\*

Julia Barnes - SFTS

Sara Brabec - JST

Jennifer Read - CJS

Tylor Sampson - CDSP\*

Emily Brook Harrison - ABSW

Joseph Hoover - JST

Max Thornton - PSR\*

\*Approved with Honors

## PHD STUDENTS

### General Comprehensives Passed

Kyoung Hee Lee - SPRT

Se Hoon Park - SPRT

### Comprehensive Proposal Approved

Sean Gross - ETHC

Daniel London - SPRT

Pui Fong Wong - SPRT

### Oral Comprehensives Passed

Carl Bear - LITG

Izak Lattu - IDS

Moakumla Longchar - HOML

### Advanced to Candidacy

Katia Moles - ETHC

Braden Molhoek - ETHC

Alan Shore - HIST

Mary Cheng - SPRT

### Oral Dissertation Successfully Defended

Andrea Sheaffer - BIBL

Patricia Sullivan Vanni - IDS

April Lynch - ART

Larry Taylor - ART

Elizabeth Gordon— SPRT

Lynn Hofstad— THEO

Patricia Sullivan Vanni— IDS

## GRADUATE THEOLOGICAL UNION

GTU Dean's Office  
2400 Ridge Road  
Berkeley, CA 94709  
<http://www.gtu.edu>

Phone: 510-649-2440  
[gtudean@gtu.edu](mailto:gtudean@gtu.edu)

### THE DEAN'S NEWSLETTER

The Dean's Newsletter is for official notices from the GTU Dean's Office regarding academic affairs and for announcements of educational events (lectures, conferences) focusing on academic research and thus of particular interest to faculty and MA and PhD students. Send submissions to Angela Muñoz, [amunoz@gtu.edu](mailto:amunoz@gtu.edu).

## Doctoral Student Committee Election Results

AAR Liaison: Michelle Mueller

Doctoral Council: Justin Lipscomb

Library Committee: Daniel London

Student Advisory Committee: Luke Devine, Suzanne Miller, Robert Peach

Student Representative to the GTU Board of Trustees: Kristin Stoneking